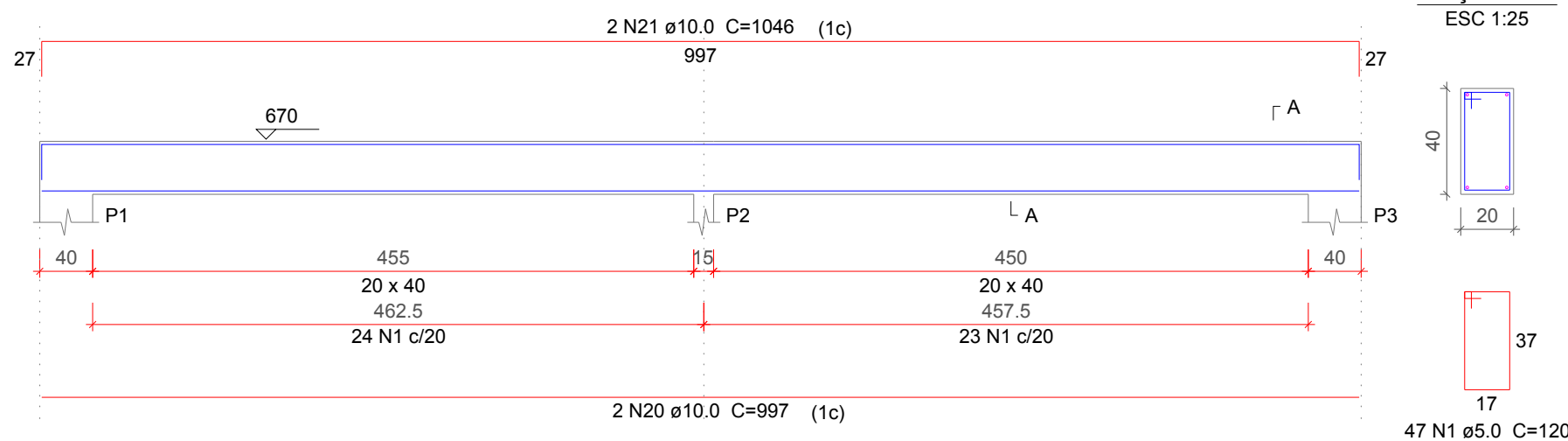


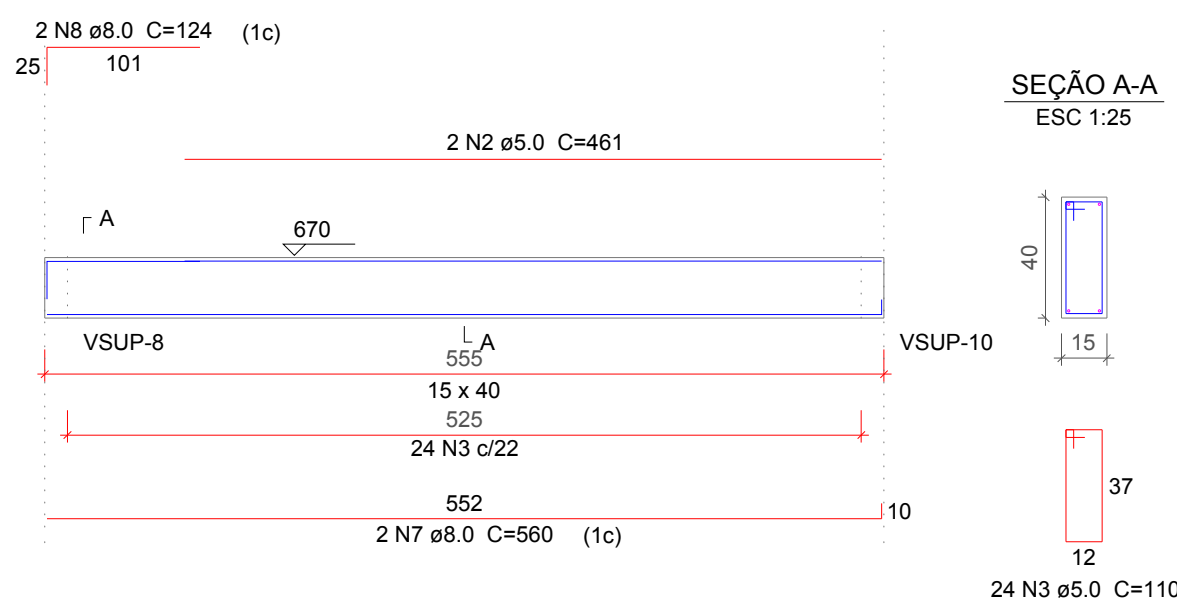
VSUP-1

ESC 1:50



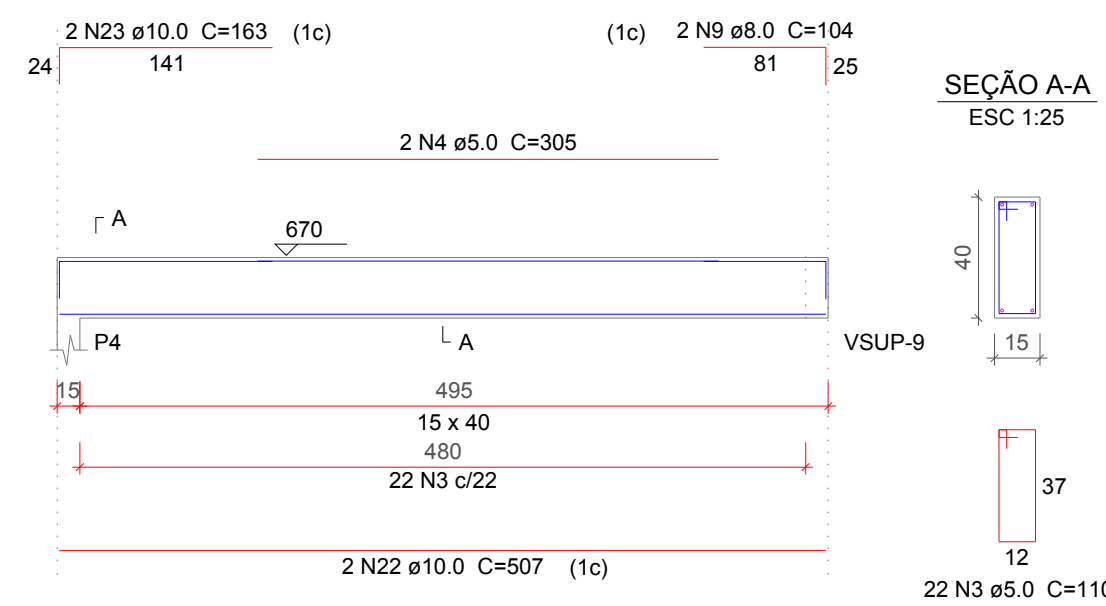
VSUP-2

ESC 1:50



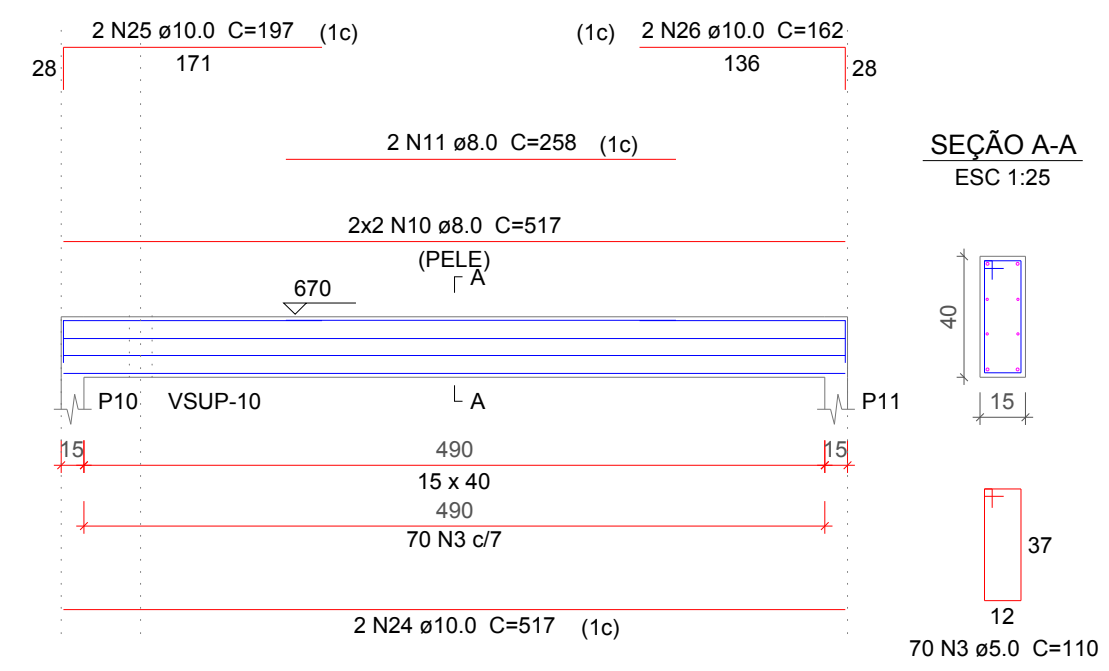
VSUP-3

ESC 1:50



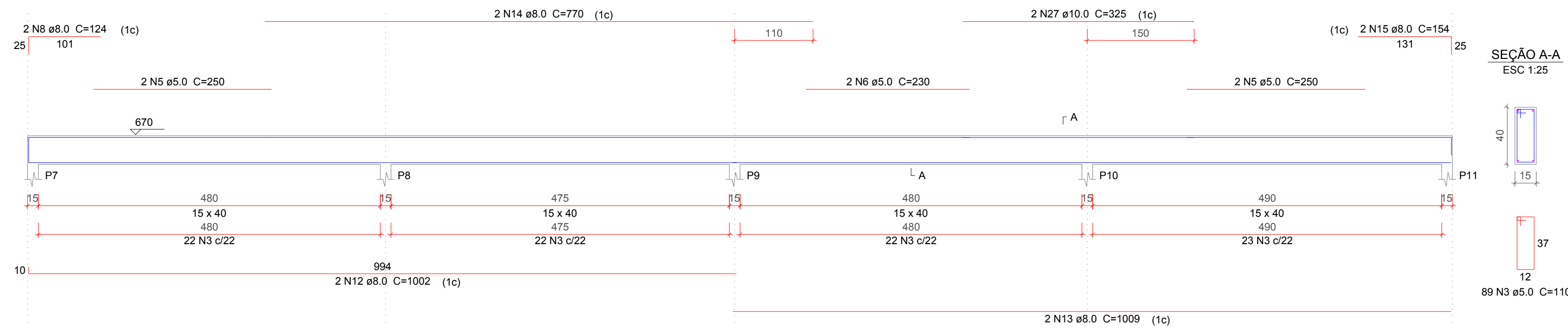
VSUP-4

ESC 1:50



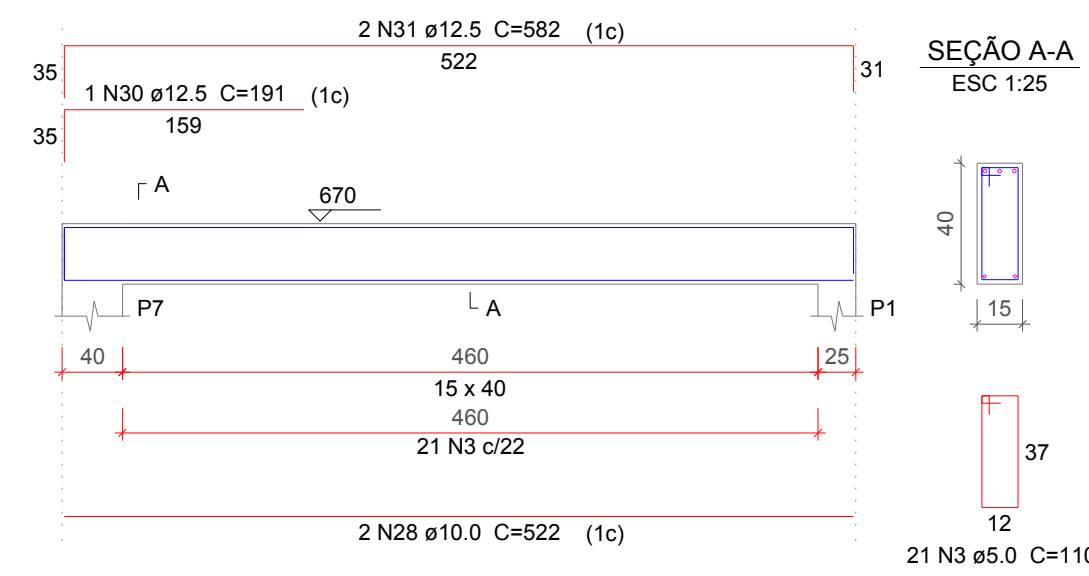
VSUP-5

ESC 1:50



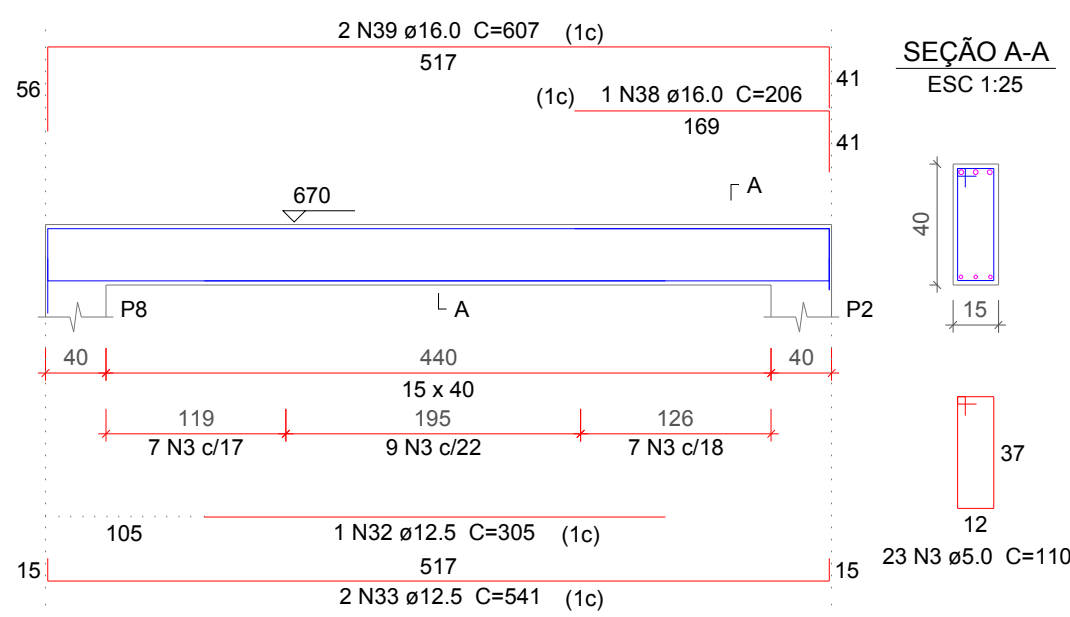
VSUP-6

ESC 1:50



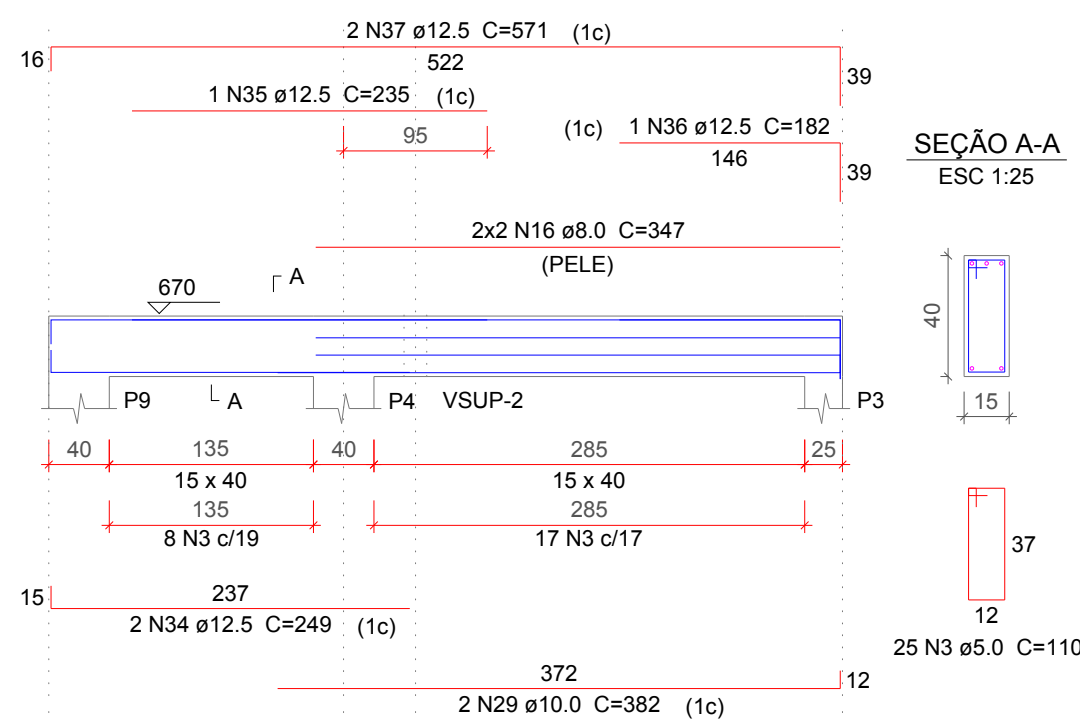
VSUP-7

ESC 1:50



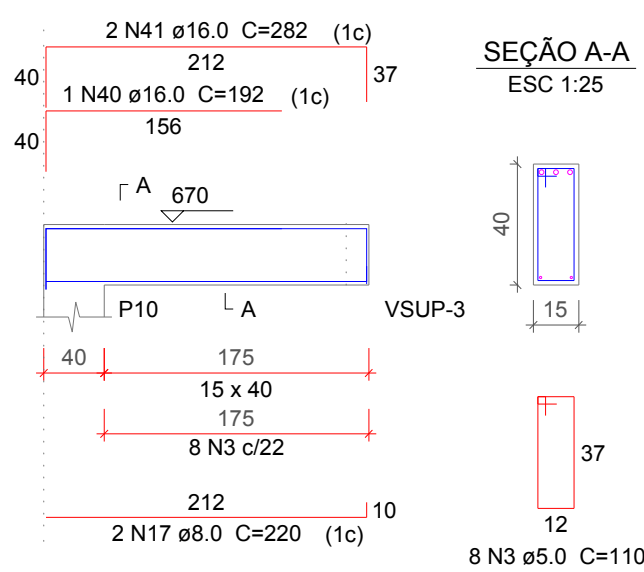
VSUP-8

ESC 1:50



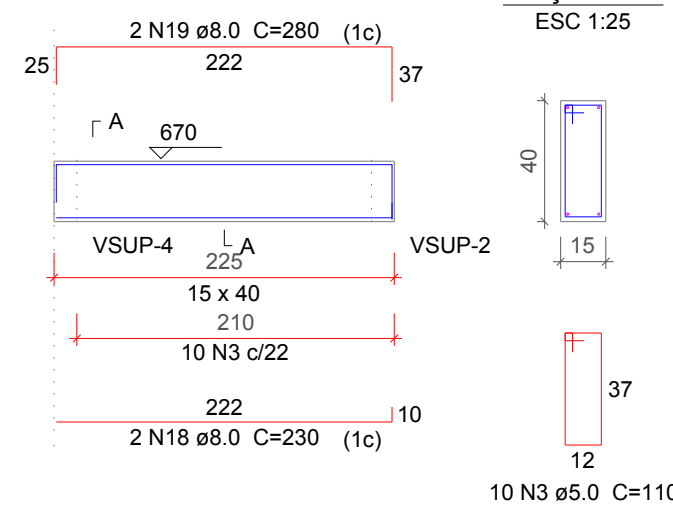
VSUP-9

ESC 1:50



VSUP-10

ESC 1:50



Resumo do aço

AÇO	DIAM	C.TOTAL (m)	PESO + 10 % (kg)
CA50	8.0	131.3	57
CA50	10.0	96.4	65.4
CA50	12.5	48	50.9
CA50	16.0	21.8	37.8
CA50	5.0	407.6	69.1
PESO TOTAL			
CA50	211		

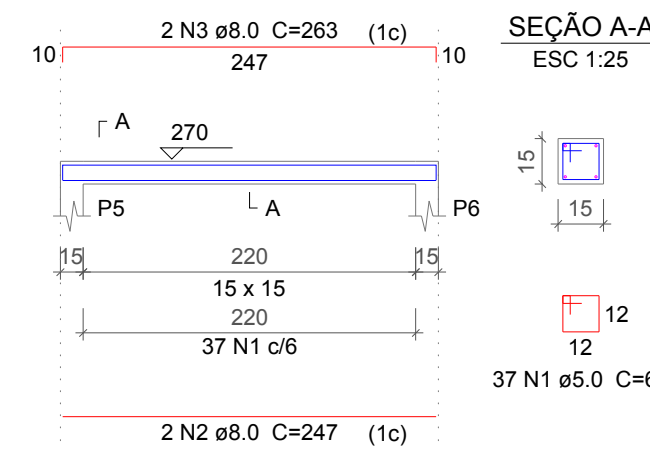
Vol. de concreto total (C-25) = 4.16 m³
Área de forma total = 63.15 m²

Relação do aço

AÇO	N	DIAM	Q	UNIT (cm)	C.TOTAL (cm)
CA60	1	5.0	47	120	5640
CA60	2	5.0	2	461	922
CA60	3	5.0	292	110	32120
CA60	4	5.0	2	305	610
CA60	5	5.0	4	250	1000
CA60	6	5.0	2	230	460
CA60	7	8.0	2	560	1120
CA60	8	8.0	4	124	496
CA60	9	8.0	2	104	208
CA60	10	8.0	4	517	2068
CA60	11	8.0	2	258	516
CA60	12	8.0	2	1002	2004
CA60	13	8.0	2	1009	2018
CA60	14	8.0	2	770	1540
CA60	15	8.0	2	154	308
CA60	16	8.0	4	347	1388
CA60	17	8.0	2	220	440
CA60	18	8.0	2	230	460
CA60	19	8.0	2	280	560
CA60	20	10.0	2	997	1994
CA60	21	10.0	2	1046	2092
CA60	22	10.0	2	507	1014
CA60	23	10.0	2	163	326
CA60	24	10.0	2	517	1034
CA60	25	10.0	2	197	394
CA60	26	10.0	2	162	324
CA60	27	10.0	2	325	650
CA60	28	10.0	2	522	1044
CA60	29	10.0	2	362	764
CA60	30	12.5	1	191	191
CA60	31	12.5	2	582	1164
CA60	32	12.5	1	305	305
CA60	33	12.5	2	541	1082
CA60	34	12.5	2	249	498
CA60	35	12.5	1	235	235
CA60	36	12.5	1	182	182
CA60	37	12.5	2	571	1142
CA60	38	16.0	1	206	206
CA60	39	16.0	2	607	1214
CA60	40	16.0	1	192	192
CA60	41	16.0	2	282	564

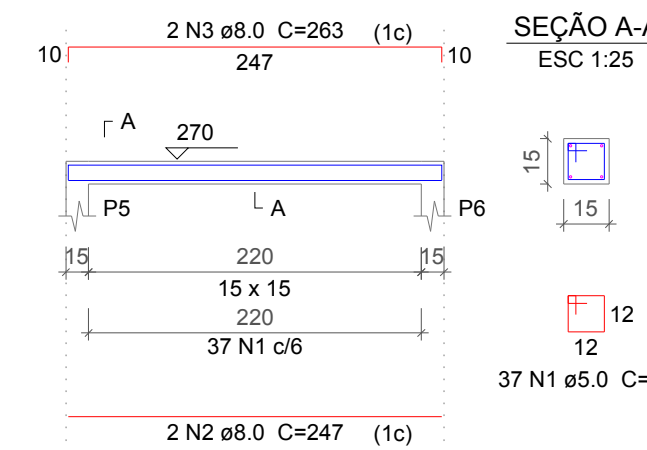
VPO-1

ESC 1:50



VPO-2

ESC 1:50



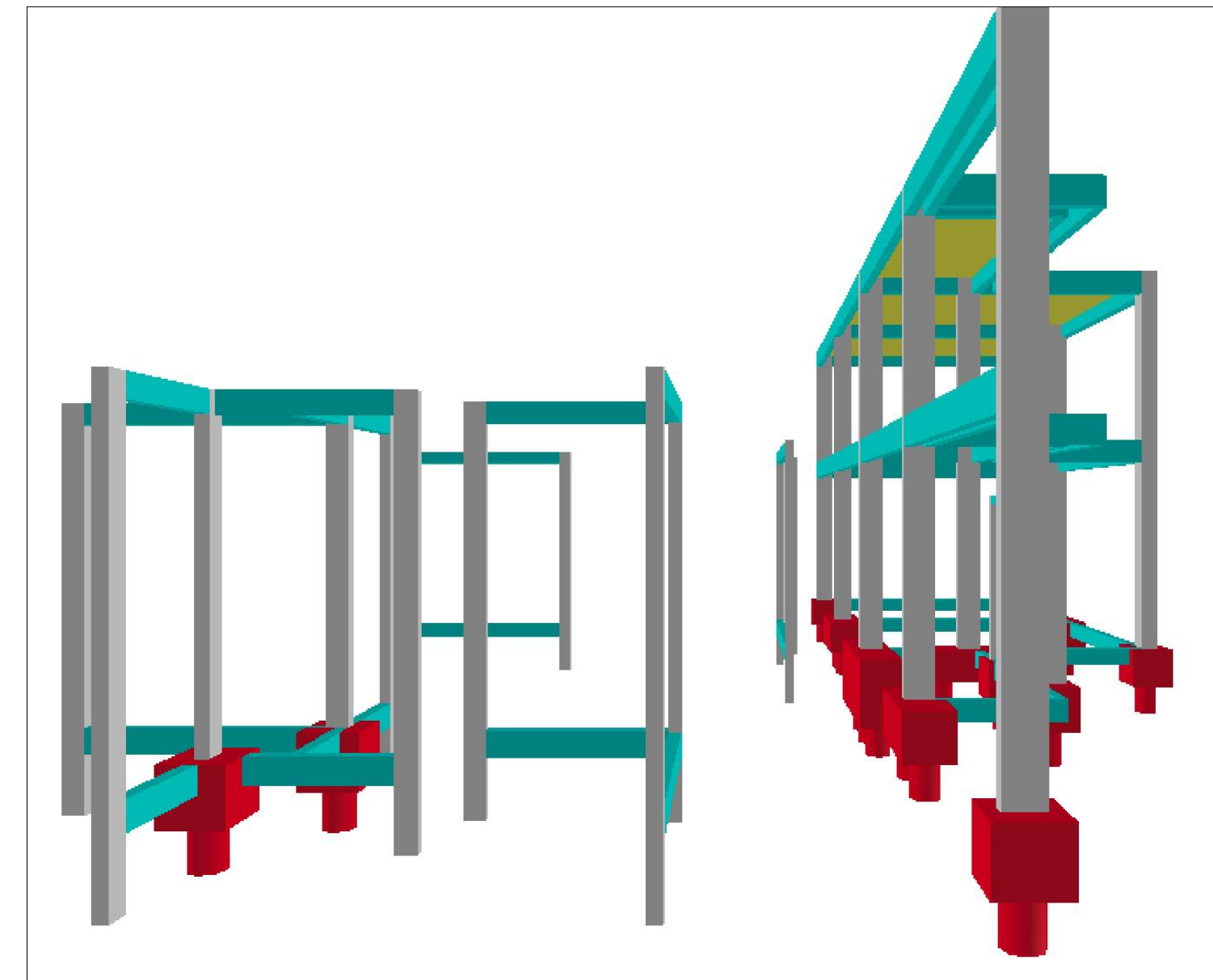
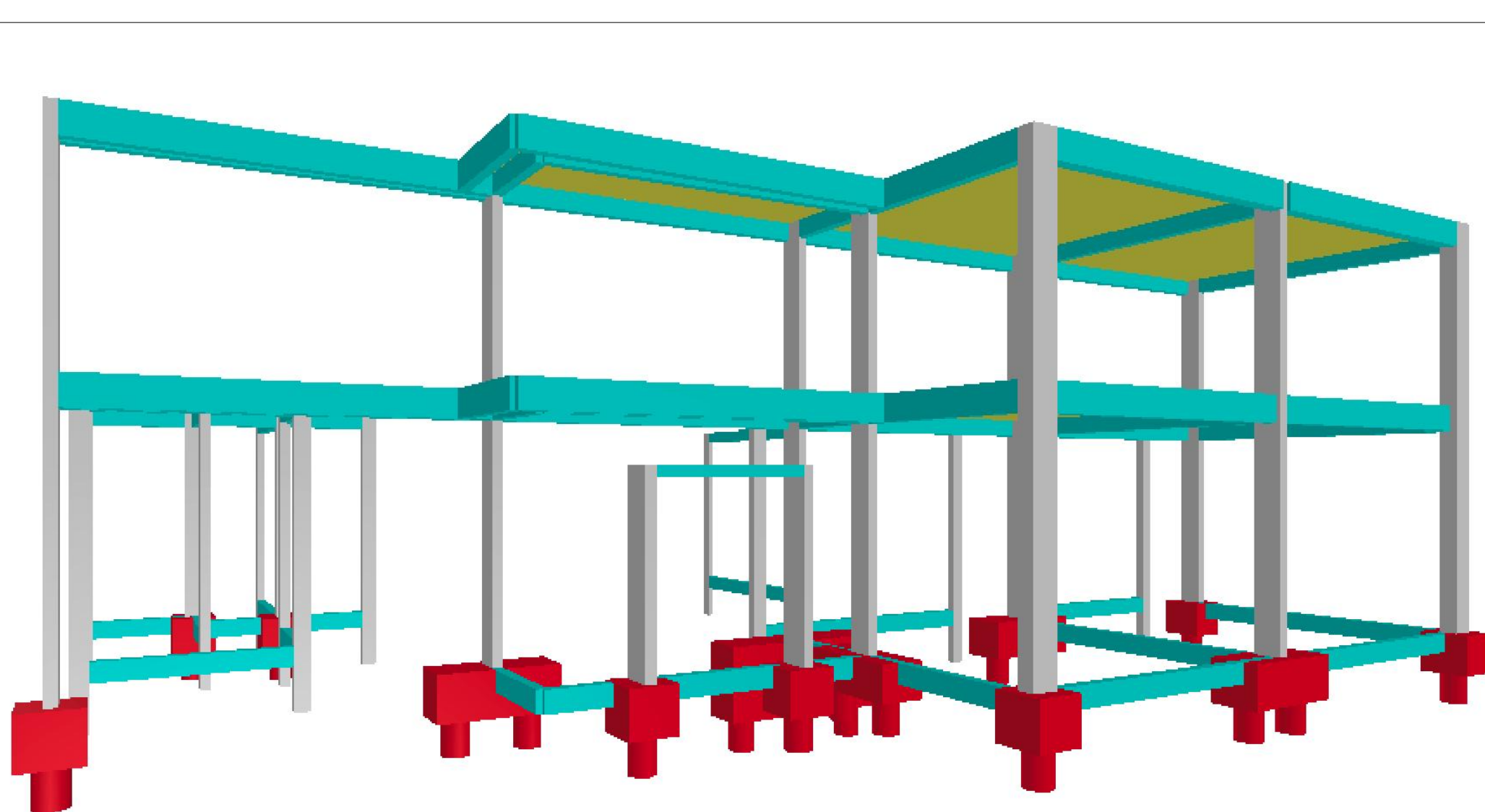
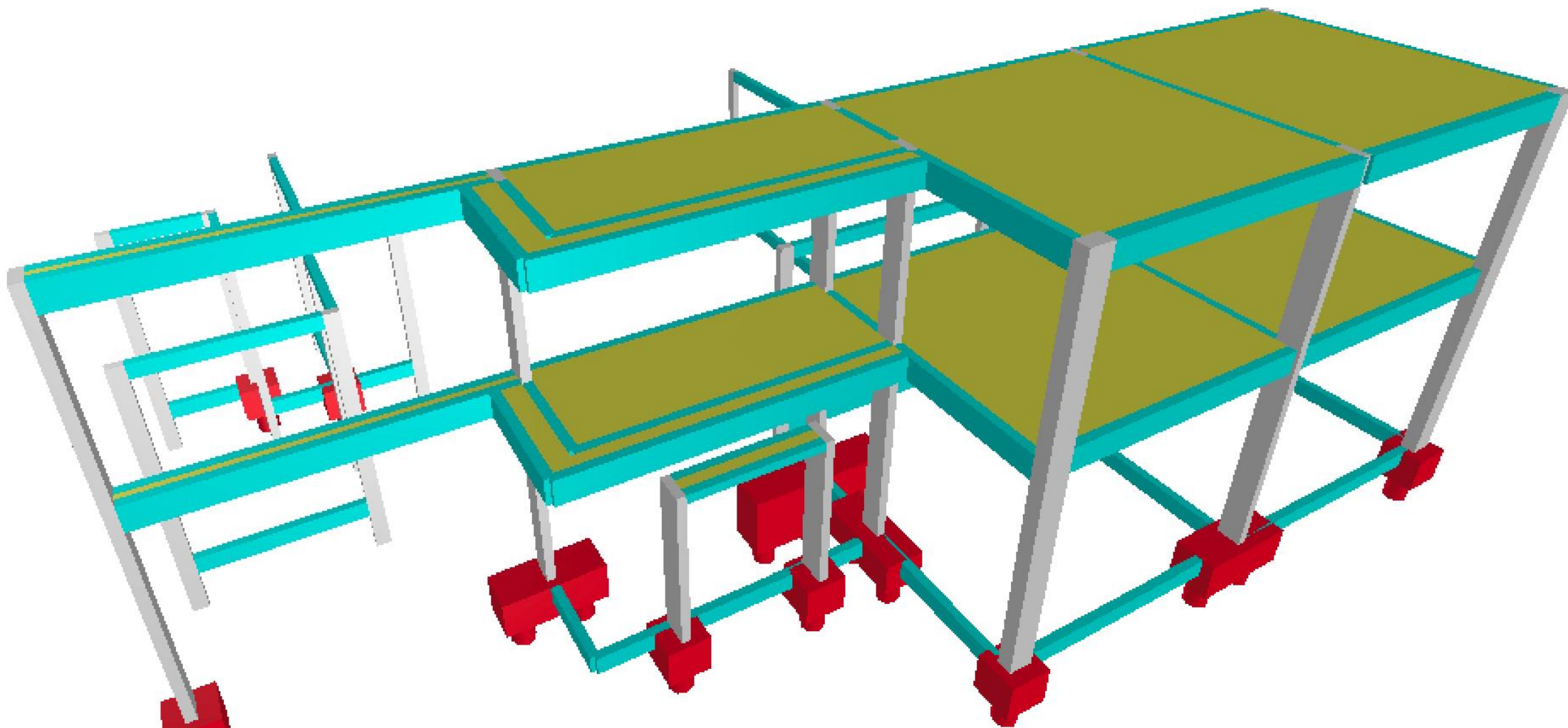
Relação do aço

AÇO	N	DIAM	Q	UNIT (cm)	C.TOTAL (cm)
CA60	1	5.0	74	60	4440
CA60	2	8.0	4	247	988
CA60	3	8.0	4	263	1052

Resumo do aço

AÇO	DIAM	C.TOTAL (m)	PESO + 10 % (kg)
CA60	8.0	20.4	8.9
CA60	5.0	44.4	7.5
PESO TOTAL			
CA50	8.9		
CA60	7.5		

Vol. de concreto total (C-25) = 0.11 m³
Área de forma total = 2.25 m²



ESTE PROJETO É DE AUTORIA E PROPRIEDADE DO ENG. CIVIL LUCAS MATHIAS SENDO PROIBIDO A SUA UTILIZAÇÃO, REPRODUÇÃO, OU ADAPTAÇÃO SEM AUTORIZAÇÃO. RESERVANDO-SE OS DIREITOS AUTORAIS NA FORMA DA LEI.

ASSINATURAS:

MUNICÍPIO DE CATANDUVAS - PR Responsável Técnico Projeto
Lucas Mathias - Crea nº 89858/D

DADOS DA OBRA:
OBRA: AMPLIAÇÃO E MELHORIA NO PRÉDIO DA PREFEITURA MUNICIPAL
ENDEREÇO: AV. KENNEDY ESQ. RUA MELGAÇO
- CASCAVEL/PR

DESCRIÇÃO / CONTEÚDO DAS FRANCHAS

PROJETO ESTRUTURAL

FORMAS - DETALHAMENTOS

Rua Fortunato bebbler, 1542, Gramado, Cascavel - Pr.
lmpojetos.engenharia@gmail.com - FONE: (45) 9834-0440

LUCAS MATHIAS - ENG. CIVIL DATA 08/12/2021